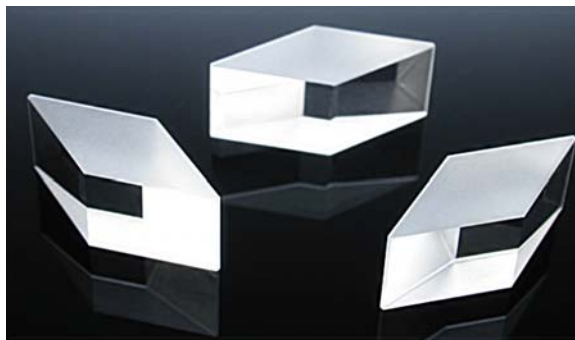
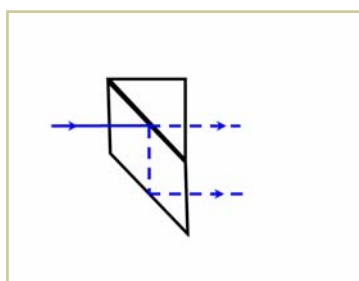
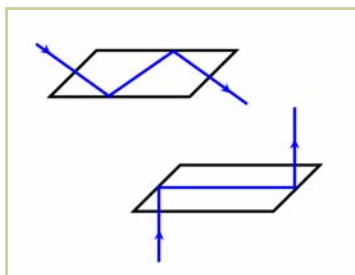


# Rhombic Prisms



Rhombic prisms produce a lateral separation of a beam input normal to any face. The output beam is parallel to the input beam so they may be used as periscopic prisms.



By arranging that the length is equal to the face  $\times \sqrt{2}$  makes these prisms suitable for combination with right angle prisms

to form lateral displacement beamsplitters.

Rhombic prisms are normally supplied uncoated as they operate by total internal reflection. However, faces may be anti-reflection coated and the reflecting surface may be coated to produce dichroic or polarizing effects. We can provide special coatings but please provide full details of the intended use and orientation of the prism.

Two different materials are offered:

UVFS ( $n_d=1.458$ )

BK7 ( $n_d= 1.517$ )

We can supply rhombic prisms in the following standard sizes (mm):

Face	Length
1.5	2.12
2.0	2.82
3.0	4.24
5.0	7.07
10.0	14.14
12.7	17.96
25.4	35.90

Other sizes will be considered on special request.

Typical Specifications	
Material:	UVFS, BK7
Surface flatness:	$\lambda/8$ @ 633 nm
Surface quality:	20/10
Angular deviation:	< 3 arcmin
Dimensions:	+0.0 / -0.2 mm
Clear aperture:	> 85% of face

**To request a quote or to order, please specify:**

Quantity — Material — Face Size — Coating (please provide full details if required)

## Optarius

PO Box 2271  
Malmesbury SN16 9FA  
United Kingdom

### Optical Components

Phone: +44 1666 575185  
Fax: +44 1666 577424  
Email: [optarius@optarius.com](mailto:optarius@optarius.com)  
Web: [www.optarius.com](http://www.optarius.com)

For a quotation — please phone, fax or email us with details of your requirements.